



Rabbit anti Coagulation Factor VIII (Cleaved form, N-term) Polyclonal Antibody

Alternative Name(s): FVIII; F8

Order Information

- **Description:** Coagulation Factor VIII (Cleaved form, N-term)
- **Catalogue:** 601-960
- **Lot:** See label
- **Size:** 100ug/200ul
- **Host:** Rabbit
- **Clone:** nan
- **Application:** IHC(P), WB
- **Reactivity:** Hu

ANTIGEN PREPARATION

A synthetic peptide corresponding to N-term of the cleavage form VLLKRHHQR of human FVIII protein. It also identical to mouse, chicken origin

BACKGROUND

The Coagulation Factor VIII (FVIII) is a glycoprotein essential for the intrinsic pathway of blood coagulation. A mature form of FVIII is a single-chain, 2351 amino acid polypeptide with a MW 265kDa. The FVIII can be activated by proteolytic cleavage intracellularly into a two-chain heterodimer, a heavy-chain and light-chain. The development of anti-factor VIII (FVIII) antibodies is currently one of the most serious complications in the treatment of haemophilia A patients due to the nature and properties of anti-FVIII antibodies, their mechanism of action, their neutralization by anti-idiotypic antibodies, and the role of T cells in FVIII inhibitor formation.

PURIFICATION

The Rabbit IgG is purified by Epitope Affinity Purification

FORMULATION

This affinity purified antibody is supplied in sterile Phosphatebuffered saline (pH7.2) containing antibody stabilizer

SPECIFICITY

This antibody recognizes ~265 kDa of human coagulation Factor VIII protein. The other species are not tested

STORAGE

The antibodies are stable for 24 months from date of receipt when stored at -20oC to -70oC. The antibodies can be stored at 2oC-8oC for three month without detectable loss of activity. Avoid repeated freezing-thawing cycles.

APPLICATIONS/SUGGESTED WORKING DILUTIONS*

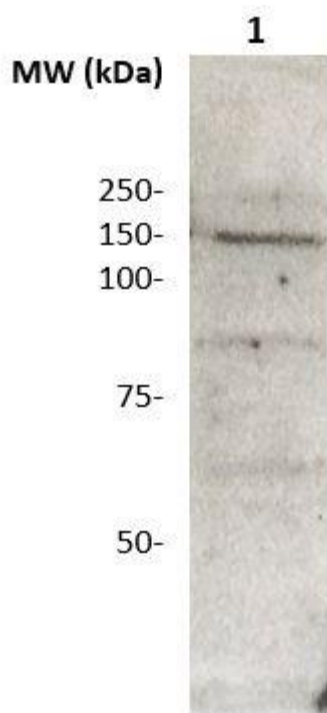
- Western Blot: 0.1-1 µg/ml
- ELISA: 0.01-0.1 µg/ml
- Immunoprecipitation: 2-5 µg/ml
- IHC: 2-10 µg/ml
- Flow cytometry: Not tested
- Molecular Weight: 200&80
- Positive Control: Kidney Tissue
- Cellular Location: Cell Membrane

*Optimal dilutions should be determined by researchers for the specific applications.

FOR RESEARCH USE ONLY.

AbboMax, Inc 2528 Qume Drive, Suite 8, San Jose, California 95131, USA
1 408-573-1898 (Tel). 1 408-573-1858 (Fax). www.abbomax.com info@abbomax.com

DATA ATTACHMENTS



Western Blot: The whole lysate derived from hepatocyte tissue (20 ug/lane) immunoblotted by Rabbit anti – FVIII (NT) antibody (Cat# 601-960) at 1:1000. Observed a major immunoreactive band at molecular weight ~200kDa.

REFERENCES

FOR RESEARCH USE ONLY.

AbboMax, Inc 2528 Qume Drive, Suite 8, San Jose, California 95131, USA
1 408-573-1898 (Tel). 1 408-573-1858 (Fax). www.abbomax.com info@abbomax.com